

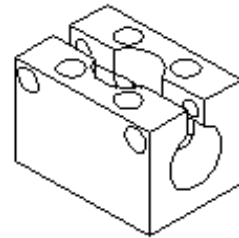


BLOCKS & BRACKETS

CLAMPING MOUNTING BLOCKS

These tough Aluminum/Steel blocks come standard with our “Robo” pattern and are used for clamping standoff pipe, clamps or a system of Robo Dress parts. Bored for 1.250” Standoff Pipe. Come standard with 5/16 SHCS and Allen nuts. The Steel block can be welded.

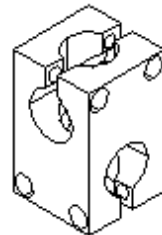
Clamp Mounting	
Part No.	Material
6651	Aluminum



90 DEGREE CLAMPING BLOCK

These tough Aluminum or Steel blocks are used in conjunction with our stand-off pipe for flexible positioning of clamps around a robot. Bored for 1.250” Standoff Pipe. Comes with 5/16 SHCS and Allen nuts. The Steel block can be welded.

90° Clamping Block	
Part No.	Material
6650	Aluminum
8345	Steel

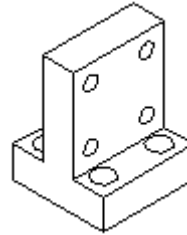


BLOCKS & BRACKETS

TWIN MOUNTING BRACKET

This rugged steel bracket has our “Robo” pattern and is used to mount pairs/combinations of clamps, or other Robo-Com V accessories.

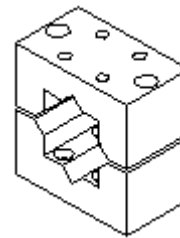
Twin Mounting Bracket	
Part No.	
	6661"



BOOM BAR CLAMPING BLOCK

These tough Aluminum blocks clamp securely to a two inch square boom bar. “Robo” bolt pattern is conveniently located on the top and bottom of the blocks.

Boom Bar Clamping Block	
Part No.	Accepts Pipe Size/Block Material
6658	2" Square / Aluminum
6512	2" Square / Steel
8469	2-1/2" Square / Aluminum
8470	2" Round / Aluminum
8393	40mm Round / Aluminum



ADAPTOR PLATE

These steel Adaptor Plates are used to join a part with a “Robo” pattern to a part with a 2-3/8” (60mm) square bolt hole pattern.

Adapter Plate			
Part No.	Size	Thickness	Material
6300	3.00" Sq	0.75"	Aluminum
6300-S	3.00" Sq	0.75"	Steel

