

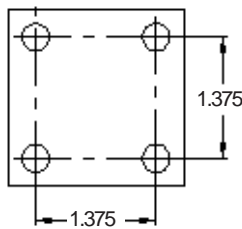


FLEX-CABLE

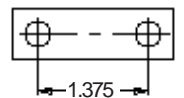
ROBO PATTERN

Our "standard Robo" (*left*) and "mini" Robo (*right*), fastener pattern is used throughout our product line unless otherwise noted. This "Robo" hole pattern supports the use of a $\frac{5}{16}$ inch diameter fastener.

STANDARD ROBO
BOLT PATTERN



MINIROBO
BOLT PATTERN



We put technology to work developing new products, from robotic accessories and dressout to machining special parts.