



FLEX-CABLE

HIGH CURRENT FURNACE CABLES

Ampacity over 10,000

STANDARD OR CUSTOM

Individual conductors peripherally located for maximum geometric mean diameter and low AC/DC resistance ration minimizing voltage loss.

From Old...



**Custom Built:
NEW and Rework**

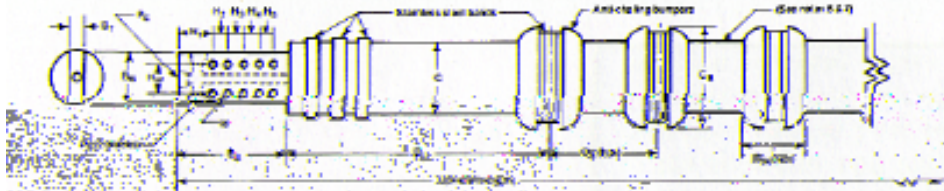
...to NEW!



Choice of HIGH TEMP resilient rubber for minimizing wire wear or corrugated, non-collapsing core for maximum flexibility - with or without Vulconized Heat Shield protection.



www.flexcable.com



CATALOG NO. (STYLE)	CABLE SIZE (MCM)	B _L	B _W	B _T	H _W	MOUNTING HOLES						P _E NPT	P _S NPT	O	C _G	D _L	D _S	D _W	REMARKS See Notes	
						QTY	H ₁ (in.)	H ₂	H ₃	H ₄	H ₅									M (Dia.)
400 AFS-1	4000	8	4	1.50	2.25	6	1-1/2	2	2			1-1/16	3/4		4-7/8				1 & 2	
500 AFS-1	5000	8	4	1.50	2.25	6														
600 AFS-1	6000	10	4-1/2	2.00	2.50	8	2	2	2	2		1-1/16	1		5-1/2	7	24	7	4	1, 2, 3 & 4
600 AFS-2			6												7	8-1/2				
700 AFS-1	7000	10	5	2.00	2.50	8	2	2	2	2		1-1/16	1		6	7-1/2	24	7	4	1, 2, 3 & 4
700 AFS-2			6												8	9-1/2				
800 AFS-1	8000	12	5	2.00	2.50	8	2-1/2	2	2	2		1-1/16	1	1	6	7-1/2	24	7	4	1, 2, 3 & 4
800 AFS-2			6												7-1/2	9				
900 AFS-1	9000	12	5	2.00	2.50	8	2-1/2	2	2	2		1-1/16	1	1	6-1/2	8	24	7	4	1, 2, 3 & 4
900 AFS-2			6												8-1/2	10				
1000 AFS-1	10000	12	6	2.00	3.00	8	2-1/2	2	2	2		1-1/16	1	1	7	8-1/2	24	7	4	1, 2, 3 & 4
1000 AFS-2															10-1/2	12				
1200 AFS-1	12000	14	6	2.50	3.00	8	3	2-1/2	2-1/2	2-1/2		1-3/16	1-1/4	1-1/4	8-1/2	10	24	7	4	1, 2, 3 & 4
1200 AFS-2															10	11-1/2				
1400 AFS-1	14000	14	6	2.50	3.00	8	3	2-1/2	2-1/2	2-1/2		1-3/16	1-1/4	1-1/4	10	11-1/2	30	7	4	1, 2, 3 & 4
1600 AFS-1	16000	16	7	3.00	3.50	10	3	2-1/2	2-1/2	2-1/2		1-3/16	1-1/4	1-1/4	10	11-1/2	30	7	4	
1800 AFS-1	18000	16	7	3.00	3.50	10	3	2-1/2	2-1/2	2-1/2		1-3/16	1-1/4	1-1/4	10	11-1/2	30	7	4	1, 2, 3 & 4

Catalog No. (Style)	Cables Size MCM (mm ²)	Ampacity*	DC Resistance Micro-OHMS/ft.		R ^{AC} /R ^{DC} Ratio @60Hz	GMR	GPM **/Cable	Minimum Bend Radius (inches)	Appx. Wt. (25' Cable)
			20°C	45°C Rise					
400 AFS-1	4000 (2000)	12000	2.680	3.000	1.642	1.62	3	32	550
500 AFS-1	5000 (2500)	15000	2.150	2.400	1.811	1.22	4	32	650
600 AFS-1	6000 (3000)	18000	1.790	2.000	1.963	1.72	5	36	760
600 AFS-2						2.57			
700 AFS-1	7000 (3500)	21000	1.530	1.710	2.103	2.05	7	40/56	890
700 AFS-2						3.20			
800 AFS-1	8000 (4000)	24000	1.340	1.500	2.225	2.06	8	40/52	1000
800 AFS-2						2.68			
900 AFS-1	9000 (4500)	27000	1.190	1.330	2.344	2.37	10	39/60	1150
900 AFS-2						3.40			
1000 AFS-1	10000 (5000)	30000	1.073	1.200	2.453	2.57	11	48/76	1400
1000 AFS-2						4.28			
1200 AFS-1	12000 (6000)	36000	0.894	1.000	2.660	3.73	14	60/72	1750
1200 AFS-2						4.44			
1400 AFS-1	14000 (7000)	40000	0.766	0.857	2.850	4.43	17	80	2100
1600 AFS-1	16000 (8000)	45000	0.671	0.750	3.030	4.46	20	80	2450
1800 AFS-1	18000 (9000)	50000	0.596	0.667	3.180	4.27	23	80	2800

NOTE - Requests for quotes or orders require the specific Cable No. (style), Overall Length (ft.) and should reference the following when applicable:

1. Full length vulcanized heat shield protection available on request.
2. Standard 4" wide bumpers available if specified.
3. Additional layer of vulcanized, aluminized material for reflecting radiant heat for one-half hose length available on request.
4. Special anti-chafing gear other than shown (and referenced in note 4) must be specified at time of order.

* Rated at maximum of 3000 amps/1000 MCM (500mm²)
 ** Minimum to maintain a maximum exit temperature of 65°C (150°F) for a 25' cable